

*Why it is important you attend ...*

Distant Drums is specifically for those members actively involved in running local Heart Children NZ branches and Family Support Workers—all volunteers just like you!

Take this most valuable opportunity to participate in workshops and training sessions, including:

- The latest updates from HCNZ Head Office, the Board, Branches and our Support Network.
- Training sessions tailored for our Committee Office Holders and Family Support Workers
- Interactive workshops on fundraising & planning.
- Interactive workshop on managing volunteers
- Ward 23b & Ronald McDonald House orientation visits

*This is a fantastic opportunity to share ideas, enhance your skills base and have some fun!*



"Providing and facilitating the best support and care for children with heart conditions and their families, in New Zealand."

Heart Children NZ Inc  
Affiliated Branches and Support Network

Northland♥Auckland♥Coromandel♥Waikato  
♥Bay of Plenty♥Rotorua♥Taupo♥Gisborne  
Hawkes Bay♥Taranaki♥Wanganui  
Manawatu♥Wellington/Wairarapa  
Nelson♥Blenheim♥Westport♥Canterbury  
Ashburton♥South Canterbury  
Waitaki♥Otago♥Central Otago♥Southland

**Please forward your Registration to:**

**Distant Drums 2009**

Post: Heart Children NZ Inc  
P O Box 108-034, Symonds Street  
Auckland  
Fax: 0-9-377 9954  
Email: Julie@heartchildren.org.nz

**To be received no later than  
Friday 1st May 2009.**

If you have any questions please contact



**Branch Workshops**

***Distant Drums  
2009***



Date: July / August 2009

**AUCKLAND**

National training &  
development program.

Specifically for the volunteer committee members & Family Support Workers of our local Heart Children NZ branches and support network.

## REGISTRATION PROCESS ...

Registrations close Friday 1st May 2009.



A completed registration form is required from each Branch



All Heart Children NZ Branches are strongly encouraged participate.



HCNZ will pay for the Branches to send **one delegate to each of the 3 OPTIONS**. Additional attendees are welcome at the branches expense.



**All Attendees are to make their own travel arrangements.** HCNZ will Reimburse a return air fare from the branch location for South Island & Lower North Island branch delegates *Up to an agreed maximum (see personalize branch details) and on receipt of the ticket to the named candidate.*

Central North Island Branches are encouraged to drive and will be reimbursed petrol expenses



Collection to and from the airport can be arranged by HCNZ



Workshop Expenses and refreshments are all covered by HCNZ



**All Attendees** are responsible for their own accommodation if required.

**Domain Lodge:** www.domainlodge.co.nz is within walking distance

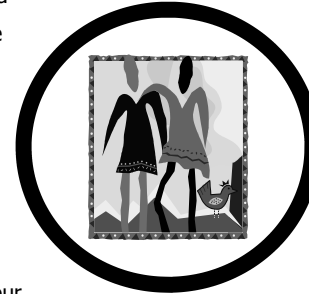
**Alpers Lodge:** www.alperslodge.co.nz in Newmarket is also handy



## DISTANT DRUMS ... 2009

Heart Children NZ relies significantly on its branches and support groups throughout New Zealand, to provide the much needed support and services to families in the local community.

As these groups are run by volunteer committee members—themselves, parents and care-givers of children with heart conditions - it is important that the organisation provides practical support and training to our volunteers.



*Let us help you  
to help others!*

Once a year, Heart Children NZ calls for representatives from every branch and support group to come together to attend our "Distant Drums" Seminar/ Workshops.

The purpose of "Distant Drums" is to provide workshops, discussions and training sessions specific to the committee volunteers of Heart Children NZ.

A stronger Heart Children NZ means a stronger community

## SCHEDULE ...

**10.00 START**  
Meeting & Greeting  
*Morning tea*

**10:30**  
Work Session One:

**11:30**  
Work Session Two:

**12:30**  
Lunch  
*Shared with office staff*

**1:00**  
Work Session Three:

**2:00**  
Work Session Four:

**3:00**  
Questions & Answers  
*Open forum*

**3:30**  
Celebrations & Close  
*Afternoon Tea*

**4.00 FINISH**

## OPTIONS ...

### LEADING THE TEAM

Managing volunteers for a cause we believe in is a rewarding achievement.

#### *Workshop for Chairpersons & Secretaries*

*Either* Saturday 27th June

*Or* Friday 24th July



### MONEY MONEY MONEY

Committee watchdogs and collecting the funds

#### *Workshop for Treasurers & Fundraisers*

*Either* Friday 26th June

*Or* Saturday 25th July



### FAMILY SUPPORT ANGELS

How much is too much? Where do I start? When do I stop?

#### *Workshop for Family Support Workers & Liaison*

*Either* Thursday 23rd July

*Or* Saturday 8th August

Optional extra — Ward 23B & Ronald McDonald House visit